



# GOVT. DEGREE COLLEGE

(AFFILIATED TO KRISHNA UNIVERSITY)

AVANIGADDA, NAAC-B

ISO 50001: 2011, ISO 14001:2015, ISO 9001:2015

## Student Satisfactory Survey

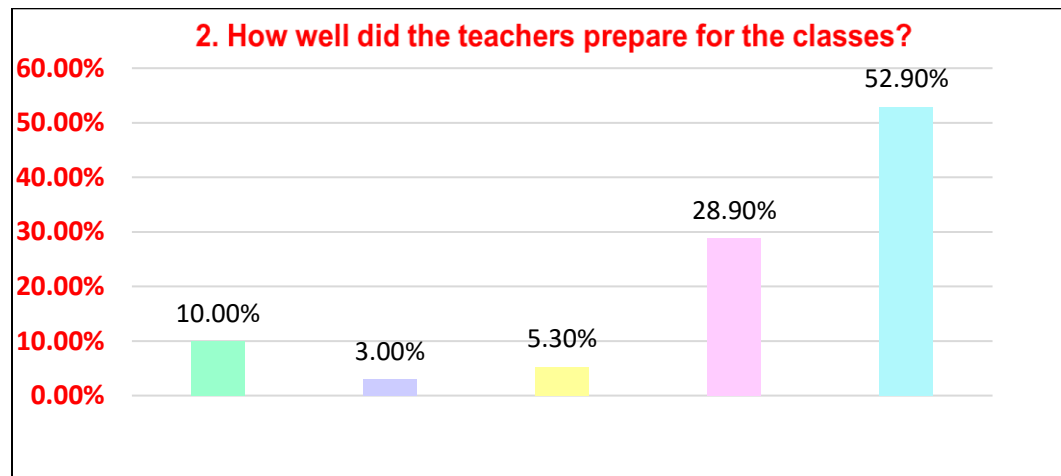
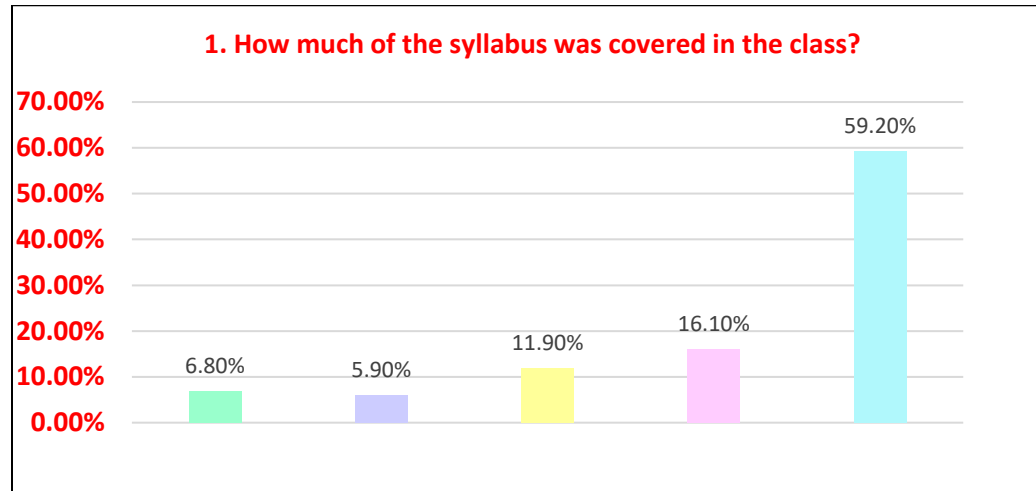
Academic Year 2019-2020

S.NO	Question	2019-2020				
		0	1	2	3	4
1	How much of the syllabus was covered in the class?	6.80%	5.90%	11.90%	16.10%	59.20%
2	How well did the teachers prepare for the classes?	10.00%	3.00%	5.30%	28.90%	52.90%
3	How well were the teachers able to communicate?	9.90%	3.80%	3.90%	29.30%	53.10%
4	The teacher's approach to teaching can best be described as	9.60%	1.80%	16.00%	17.90%	54.90%
5	Fairness of the internal evaluation process by the teachers	7.90%	0.90%	7.20%	17.90%	65.90%
6	Was your performance in assignments discussed with you?	8.00%	1.50%	7.30%	12.90%	69.90%
7	The institute takes active interest in promoting internship, student exchange, field visit opportunities for students.	4.70%	3.50%	13.90%	10.90%	67.30%
8	The teaching and mentoring process in your institution facilitates you in cognitive, social and emotional growth.	6.00%	2.90%	6.00%	33.20%	51.70%
9	The institution provides multiple opportunities to learn and grow.	7.90%	2.00%	7.70%	30.50%	52.30%
10	Teachers inform you about your expected competencies, course outcomes and programme outcomes.	4.90%	2.90%	7.00%	15.60%	69.10%

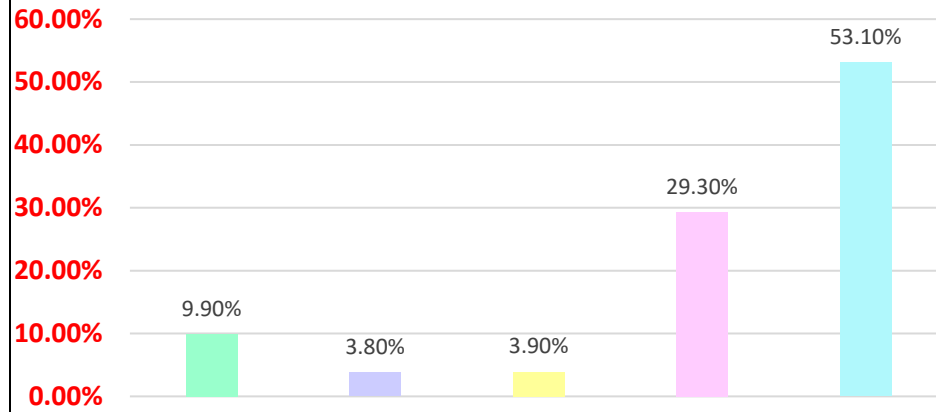
11	Your mentor does a necessary task to you	9.00%	4.20%	4.90%	17.50%	64.50%
12	The teachers illustrate the concepts through examples and applications.	5.90%	3.00%	6.90%	19.50%	64.50%
13	The teachers identify your strengths and encourage you with providing right level of challenges.	9.50%	2.90%	4.50%	19.00%	63.90%
14	Teachers are able to identify your weakness and help you to overcome them.	8.70%	4.20%	4.00%	17.40%	66.10%
15	The institute makes effort to engage students in the monitoring, review and continuous quality improvement of the teaching learning process.	6%	1.00%	4.40%	16.90%	71.90%
16	The institute/teachers use student centric methods, such as experiential learning, participative learning and problem solving methodologies for enhancing learning experiences.	7.00%	5.60%	7.90%	17.60%	61.50%
17	Teachers encourage you to participate in extracurricular activities.	7.50%	2.60%	10.50%	18.60%	60.40%
18	Efforts are made by the institute/teachers to inculcate soft skill, life skills and employability skills to make you ready for the world of work.	7.90%	5.00%	7.80%	22.10%	57.20%
19	What percentage of teachers use ICT tools such as LCD projector, multimedia,etc.,while teaching.	9.70%	5.30%	10.90%	40.10%	34.40%
20	The overall quality of teaching-learning process in your institute is very good	6.70%	1.90%	9.60%	22.10%	59.20%

## Graphical Representation

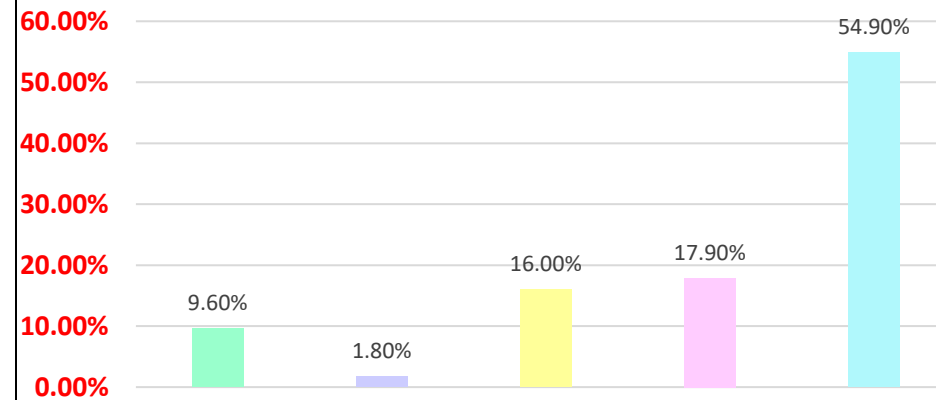
Color indications for options				
Least Rating 0	1	2	3	Top Rating 4



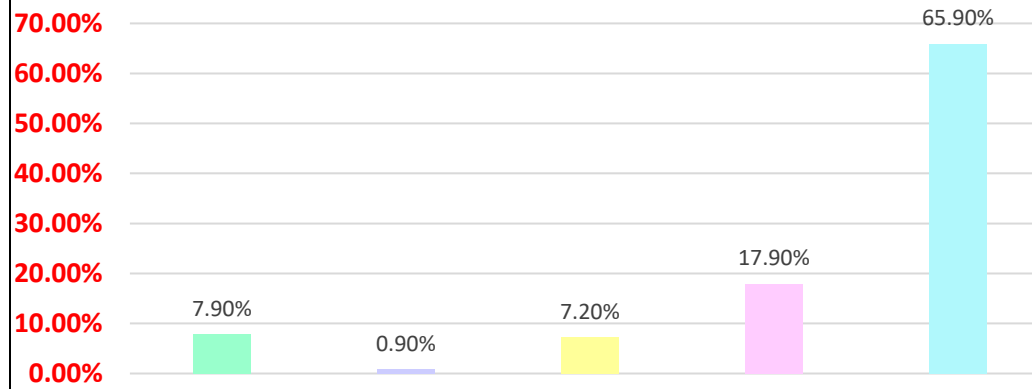
### 3. How well were the teachers able to communicate?



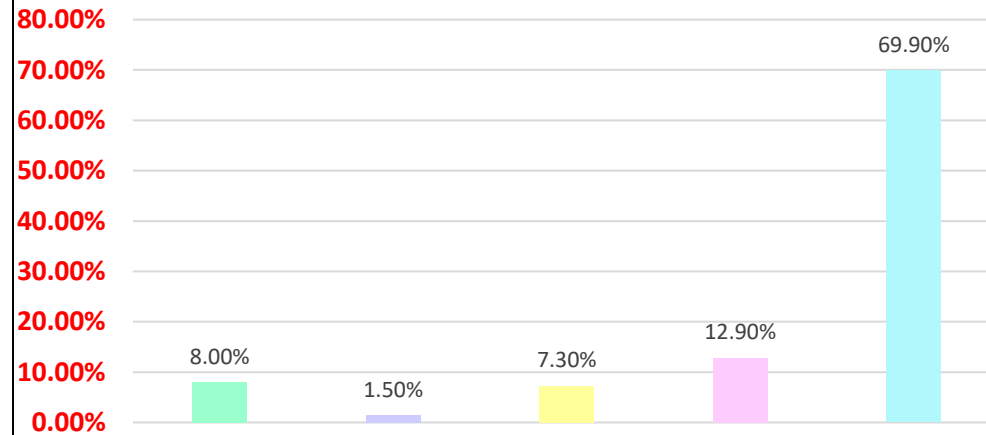
### 4. The teacher's approach to teaching can best be described as



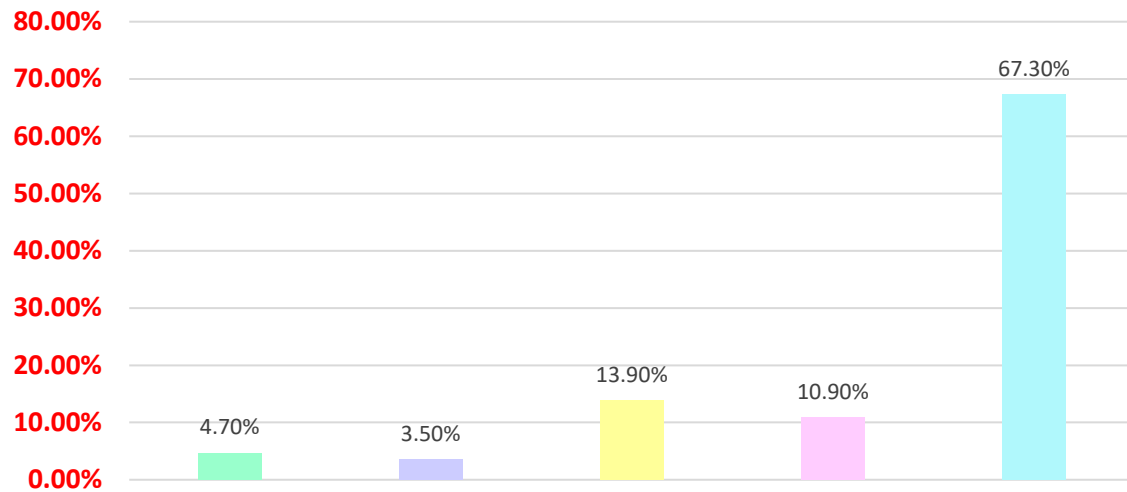
### 5. Fairness of the internal evaluation process by the teachers



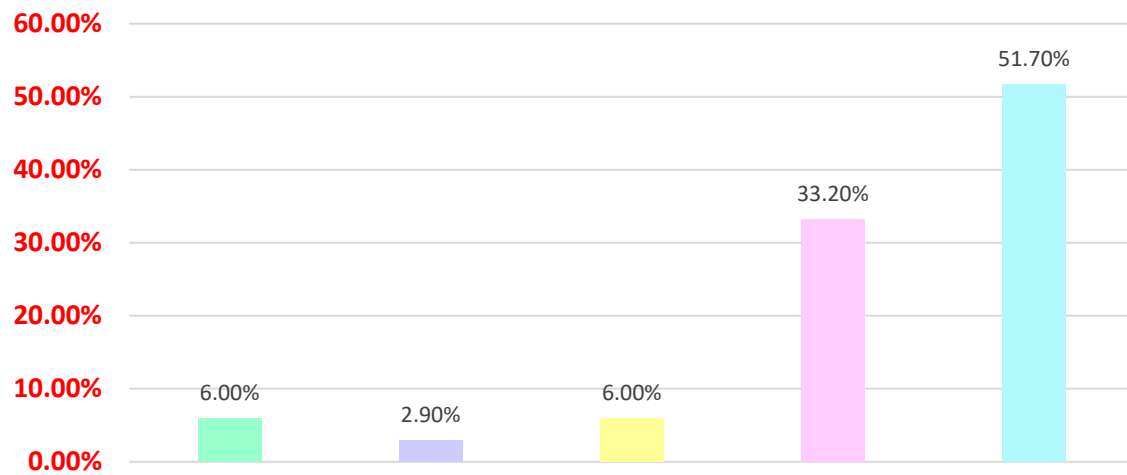
### 6. Was your performance in assignments discussed with you?



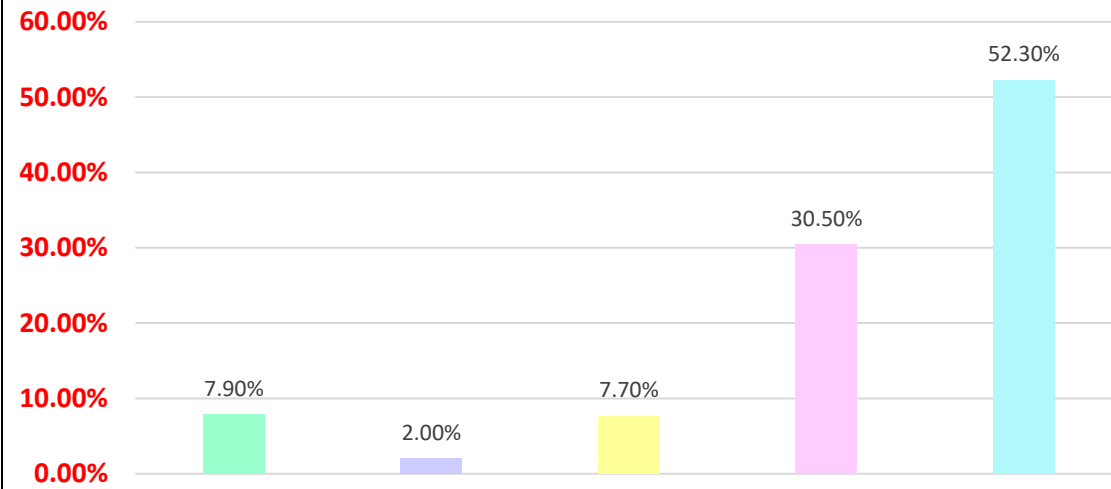
**7. The institute takes active interest in promoting internship, student exchange, field visit opportunities for students.**



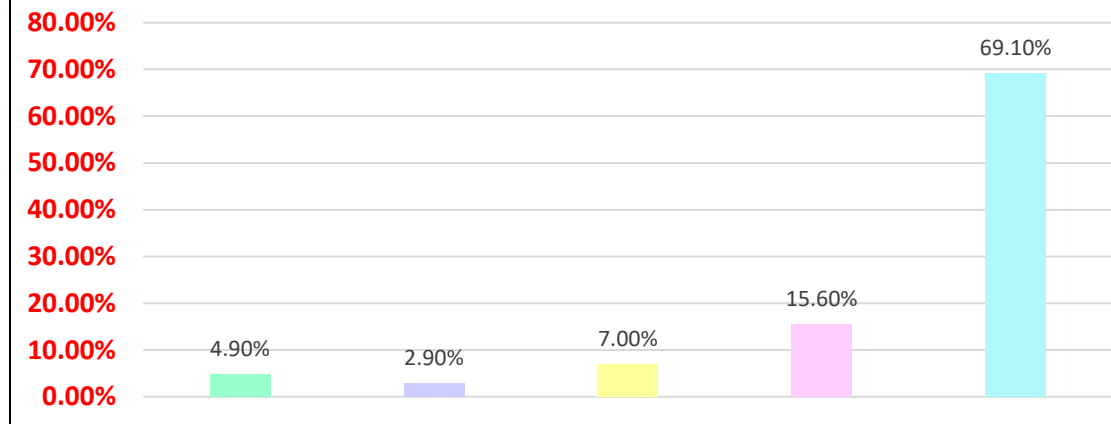
**8. The teaching and mentoring process in your institution facilitates you in cognitive, social and emotional growth.**

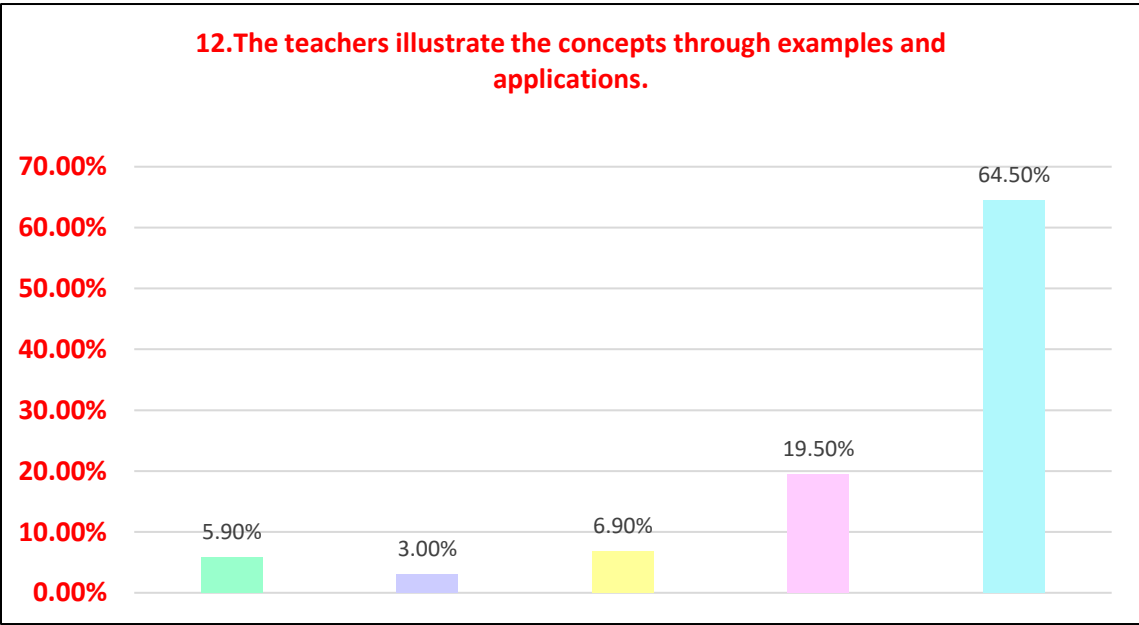
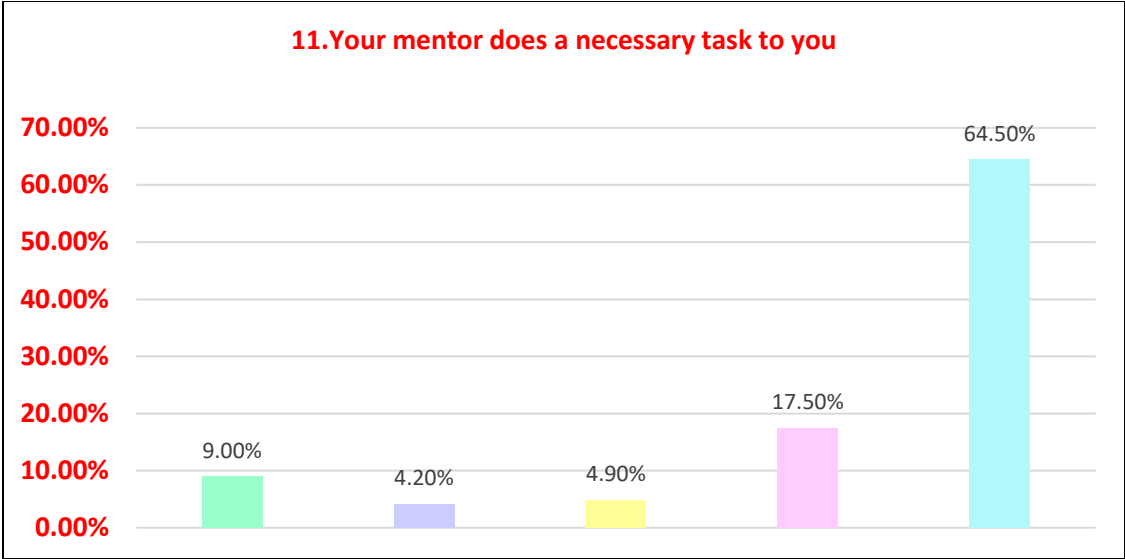


**9. The institution provides multiple opportunities to learn and grow.**



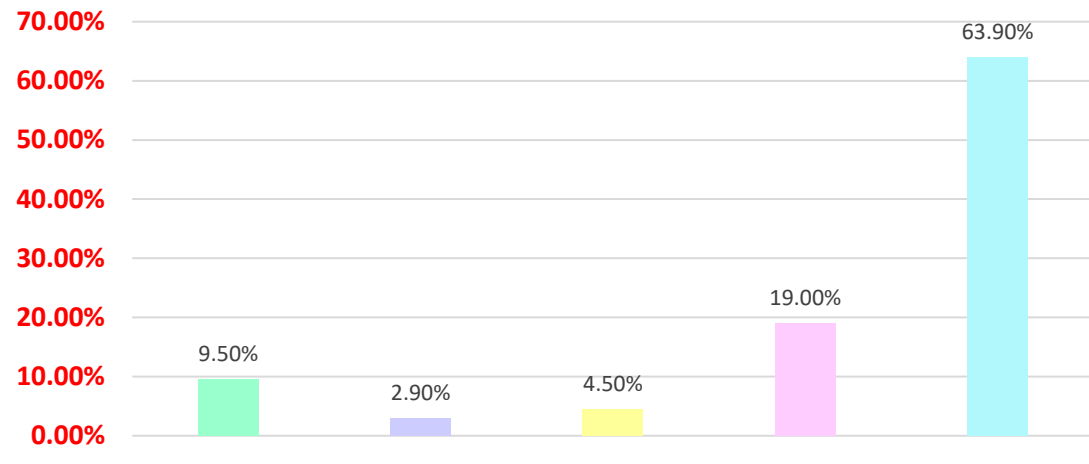
**10. Teachers inform you about your expected competencies, course outcomes and programme outcomes.**



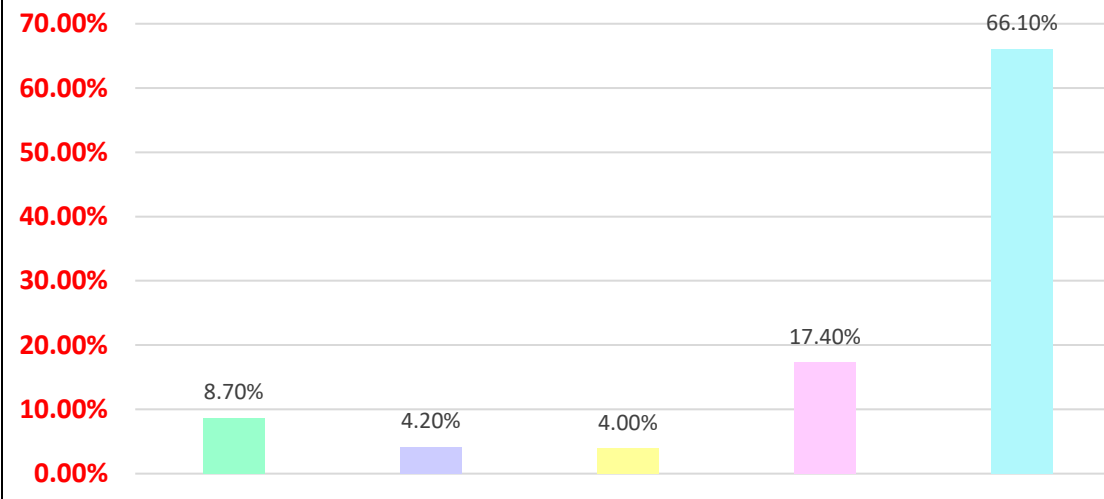




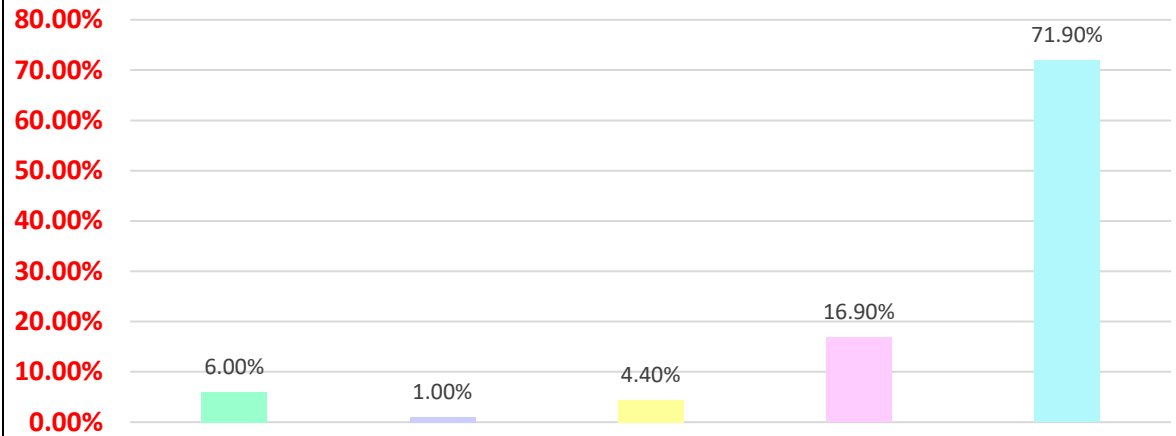
**13.The teachers identify your strengths and encourage you with providing right level of challenges.**



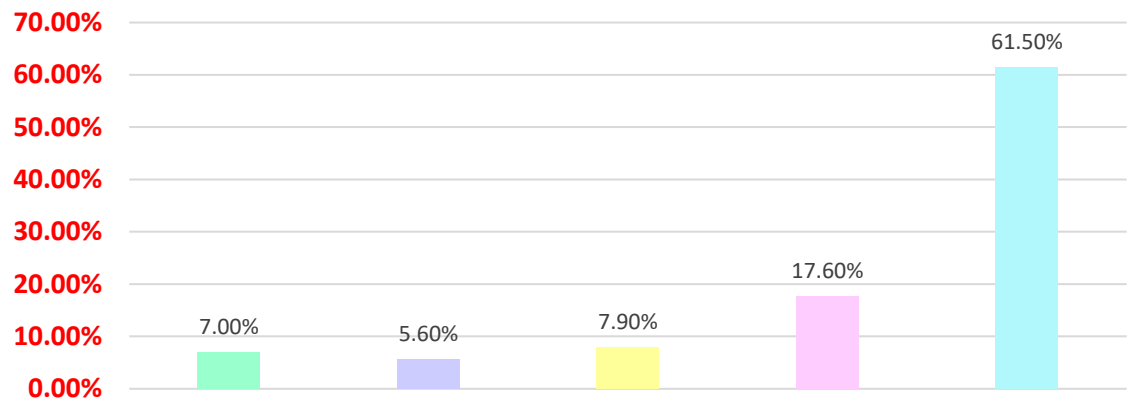
**14.Teachers are able to identify your weakness and help you to overcome them.**



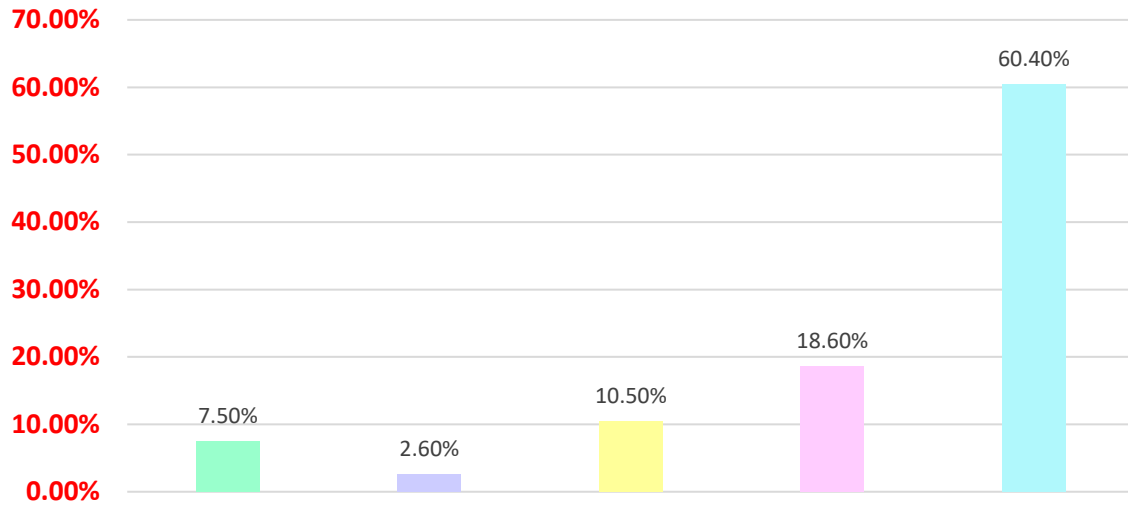
**15. The institute makes effort to engage students in the monitoring, review and continuous quality improvement of the teaching learning process.**



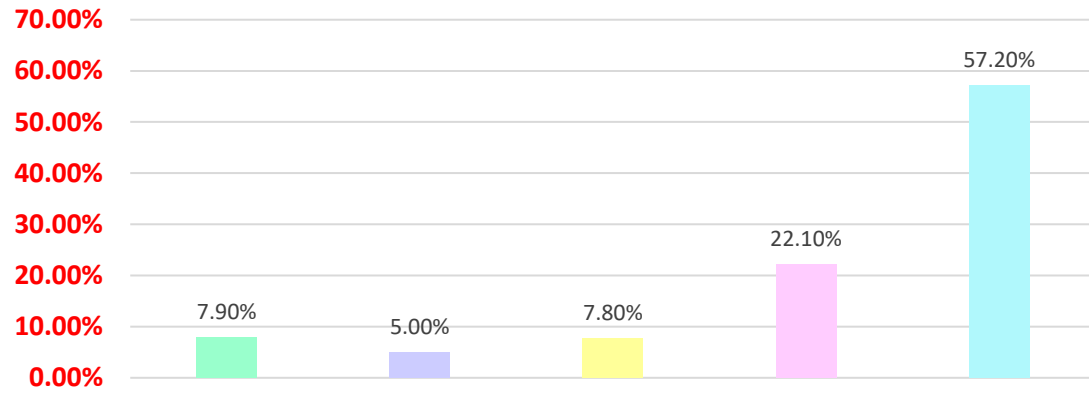
**16. The institute/teachers use student centric methods, such as experiential learning, participative learning and problem solving methodologies for enhancing learning experiences.**



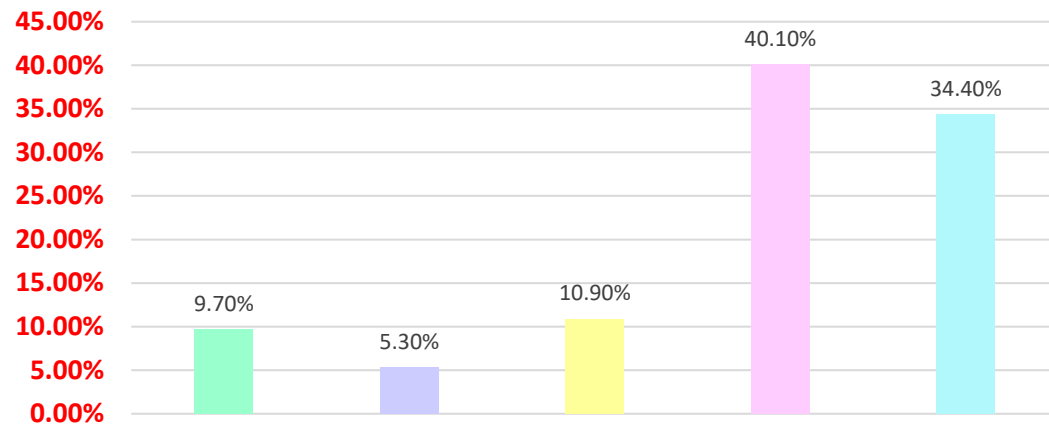
**17. Teachers encourage you to participate in extracurricular activities.**



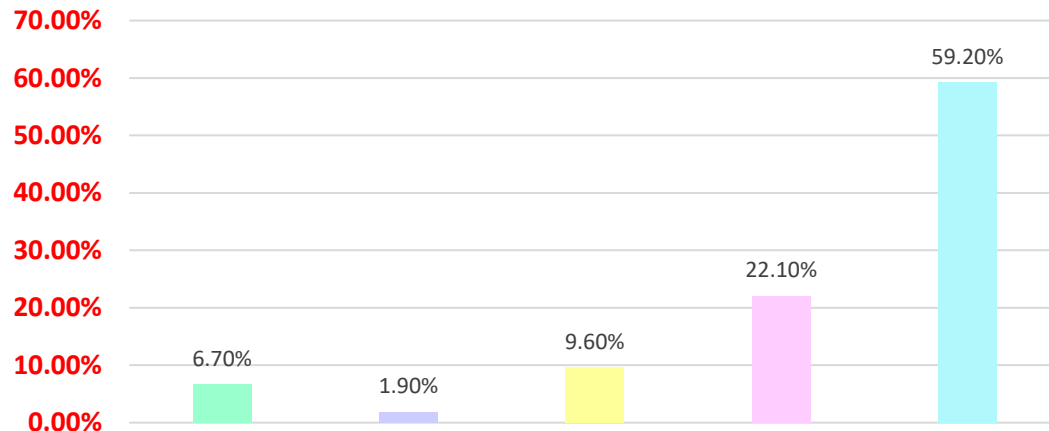
**18. Efforts are made by the institute/teachers to inculcate soft skill, life skills and employability skills to make you ready for the world of work.**



**19. What percentage of teachers use ICT tools such as LCD projector, multimedia, etc., while teaching.**



**20. The overall quality of teaching-learning process in your institute is very good**



## **Analysis and Action Taken Report(ATR)**

- 1) **Analysis:** - About **59.20%** students gave their response that 85% - 100% syllabus is covered, but **6.80%** students are dissatisfied with poor syllabus coverage.

**ATR:** - Enquired the details of less percentage of syllabus coverage and gave counseling to concerned teacher.

- 2) **Analysis:** About **52.90%** students gave them response that teaches thoroughly prepares for the classes but **10.00%** students have not satisfied about the preparation of class

**ATR:** - A general meeting was conducted to the teachers who are going to classes with in sufficient preparation and suggested them to prepare well

- 3) **Analysis:** About **53.10%** students gave them response that the teacher is communicating thoroughly, but **9.90%** students are said that won't teach at all.

**ATR :** Through a personal intention with students, identified the facility who are not communicating all the related matters to students ,and suggested them to communicate the relevant matters to students in time.

- 4) **Analysis:** About **54.90%** students gave them response that excellent teachers approach to teaching with best, but **9.60%** students are said that poor approach.

**ATR:** Counseled the teachers to improve their teaching skills by attending FDPS especially on "teaching methodologies".

- 5) **Analysis:** About **65.90%** students gave their response that always said in the internal evaluation process by the teachers, but, **7.90%** students are dissatisfied with evaluation.

**ATR:** Directed to students to raise an issue in grievances cell and advice teachers to evaluate the answer scripts carefully.

- 6) **Analysis:** About **69.90%** students gave their response that every time the performance in assignment discussed with students but, **8.00%** students said that never discussed with them.

**ATR:** Advice teachers to discuss with the students about the mistakes committed by him/her in presenting assignment.

- 7) **Analysis:** About **67.30%**students gave their response that regularly institute takes active interest in promoting internship students exchange etc, but, **4.70%** students said that are dissatisfied about this.

**ATR:** Planned to arrange more number field trips if possible at least one field trip from each department advised facility to think about students exchange program.

- 8) **Analysis:** About **51.70%** students gave their response about emotional growth in the institution but **6.00%** students are dissatisfied about the facilities.

**ATR:** We will try to increase the % of students with effective mentioning system by following of the parents intentions, where ever necessary.

- 9) **Analysis:** About **52.3%** students gave their response about multiple opportunities to grow, but **7.90%** students are said that strongly disagree

**ATR:** Planning to introduce certificate/ add on progressive in the coming year.

- 10) **Analysis:** About **69.1%** students gave their response

**ATR:** Try to display the entire course outcomes on the notice board, and also a special class will be taken newly admitted batch by academic in the coming year.

- 11) **Analysis:** About 64.5% students gave their response to every time necessary task but, 9.00% students are dissatisfied about mentor.

**ATR:** Given suggestions to the mentors to monitor the student regularly.

- 12) **Analysis:** About 64.5% students gave their response every time teachers illustrate the concepts through even & application, but 5.9% students were dissatisfied about this.

**ATR:** Suggested finally to explain with more illustrations when even available.

- 13) **Analysis:** About 63.9% students gave teachers identify the strengths and encourage, but 9.5% unable to say.

**ATR:** Suggested teachers to identify strengths of all students.

- 14) **Analysis:** About 66.1% students gave response every time teachers are identifying the weaknesses and help us to overcome, but 8.7% gave response never.

**ATR:** Suggested teachers to identify their weakness of all students and to encourage them to overcome.

- 15) **Analysis:** About 71.9% students gave response Strongly Agree in improvement of the teaching learning process, but 6.0% students gave strongly disagree.

**ATR:** Suggested facility to reviews on CIA.

16) **Analysis:** About 61.5% of students gave response to a great extent of student centric methods, but 7.0% students gave response not at all.

**ATR:** Suggested faculty to introduce innovative teaching methods for the benefit of the students

17) **Analysis:** About 60.4% students gave response Strongly Agree to participate in extracurricular activities, but 7.5% of students gave response strongly disagree.

**ATR:** Suggested faculty to motivate students participate in extracurricular activities and to explain them the importance of these type of achievement in their career.

18) **Analysis:** About 57.2% students gave response to a Great Extent to learn about soft skills, life skills and employability skills to make us ready for the world of work, but 7.9% students gave response not at all.


**ATR:** suggested English faculty to take more number of classes for developing soft & skills if possible in zero hours on in online classes

19) **Analysis:** About 34.4% students gave response above 90% of teachers using ICT tools such as LCD projector, Multimedia, etc. while teaching, but 9.7% gave 0-29%.

**ATR:** Suggested faculty to adopt latest ICT tools for teachers like Blog, Nearpod, Kahoot etc.,

20) **Analysis:** About 59.2% students gave response strongly Agree the quality of teaching-learning process in institute is very good, but 6.7% responses is Strongly Disagree.

**ATR:** Suggested the faculty to check whether the overall teachers learning process is good and to take initiation wherever necessary.

  
**Principal**  
**GOVT. DEGREE COLLEGE**  
**ANIGADDA, Krishna. 521 122**